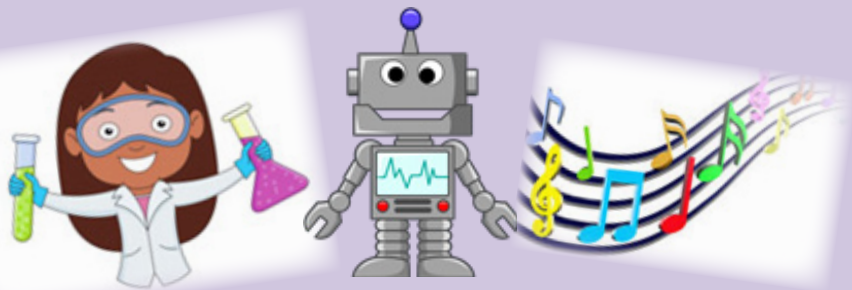


2018 Leitchfield



Kid's College

Beginning Robotics

Build and program a robot using the Lego Mindstorm EV3 Kits. The camp will include techniques for building and programming robots to move and perform tasks. Topics include, motor torque vs. speed, various types of mechanisms, and programming strategies.

Campus	Level	Date	Time	Cost
Leitchfield	Grades 1-4	June 11-15	9 a.m.-Noon CST	\$125
Leitchfield	Grades 5-8	June 11-15	1 p.m.-4 p.m. CST	\$125

Sounds of Music

This camp is designed to help develop a life-long love of music. Students will be exposed to the basics of reading and writing music, and will have the chance to showcase their talents. Students will also explore music in all of its exciting forms!

Campus	Level	Date	Time	Cost
Leitchfield	Grade 3-8	June 11-15	1 p.m.-4 p.m.	\$125

Mad Scientist and Strange Matters

Strange matter is the study of stuff, understanding how it is put together, used, changed and more! Students will study fluids, build a hockey puck, study foam, and perform other activities to investigate how engineers transform materials.

Campus	Level	Date	Time	Cost
Leitchfield	Grade 4-8	June 11-15	1 p.m.-4 p.m.	\$125

Safety & Program Guidelines

BEFORE CLASS BEGINS:

- Register your child based on their **current** grade.
- Children should wear comfortable play clothes that can get messy and are easily cleaned.
- Give your children a written list of their classes and classrooms.
- Talk with your children about safety issues in all public places, such as the college's campus.
- If this is your child's first experience at ECTC, we suggest visiting the campus before class begins to become familiar with the campus and class locations.
- Introduce yourself to your child's instructor.
- Inform instructors if someone else is picking up your children.
- If your child is attending an all-day class OR two consecutive half-day classes, send a sack lunch for your child. **Lunch is not included.**
- You are responsible for your children before and after the time they are officially in class. Please discuss your drop-off and pickup arrangements with your child before the first class. Your child may be dropped off 15 minutes before class.
- Kid's College staff and faculty members **will not** dispense medication as we are not properly trained to do so.

DURING CLASS SESSIONS:

- Appropriate behavior is expected. Students can be dismissed for misbehavior.
- Walk your children to class and meet them outside the classroom after class.
- Do not park in "Handicapped" or "Faculty & Staff" parking spaces unless you have a permit. Park only in general parking areas.

Registration Information

- **CANCELLATION POLICY:**
We reserve the right to cancel a class due to insufficient enrollment. In that case, students will be contacted by phone before the first class and will receive a full refund. Every effort will be made to accommodate the student in other classes.

HOW TO REGISTER

Mail your registration form with payment to:
**ECTC/Workforce Solutions
LRC Building
610 College Street Rd.
Elizabethtown, KY 42701**

Call us at: (270) 706-8700